

Common Feedback on PBL-3

The Good!

- Nearly everyone got their WEAP models working and correctly modeled the reservoir scenarios
- Many yield-reliability plots are effectively presented and interpreted
- Several reports are nearly ready to forward onto Bob and Chris!

Model setup

- Make sure to explain how the WEAP model was setup – overview, data, and composition of data
- Explain how the reservoir scenarios were modeled – both physical and operational aspects

Cost estimates

- Consider inflation if using older cost estimates (\$1 today \neq \$1 in 1990 or 2000)
- Reservoir storage capacity is not a good way to estimate reservoir costs. Most reservoir costs involve dam construction => moving earth
- Even better to break out reservoir costs to land acquisition, dam building, etc...
- The no reservoir alternative has a cost!!!!!! Which is _____. You must also include this cost in the costs for the other alternatives.

Presenting Figures (see Figure 3)

- Great use of colors to differentiate traces. Avoid using reds and greens (5 to 10% of males cannot differentiate these colors). See [recommended color schemes for figures](#).
- Reliability plots must only have an upper limit of 1.0

If revising, use update reservoir evaporation data!

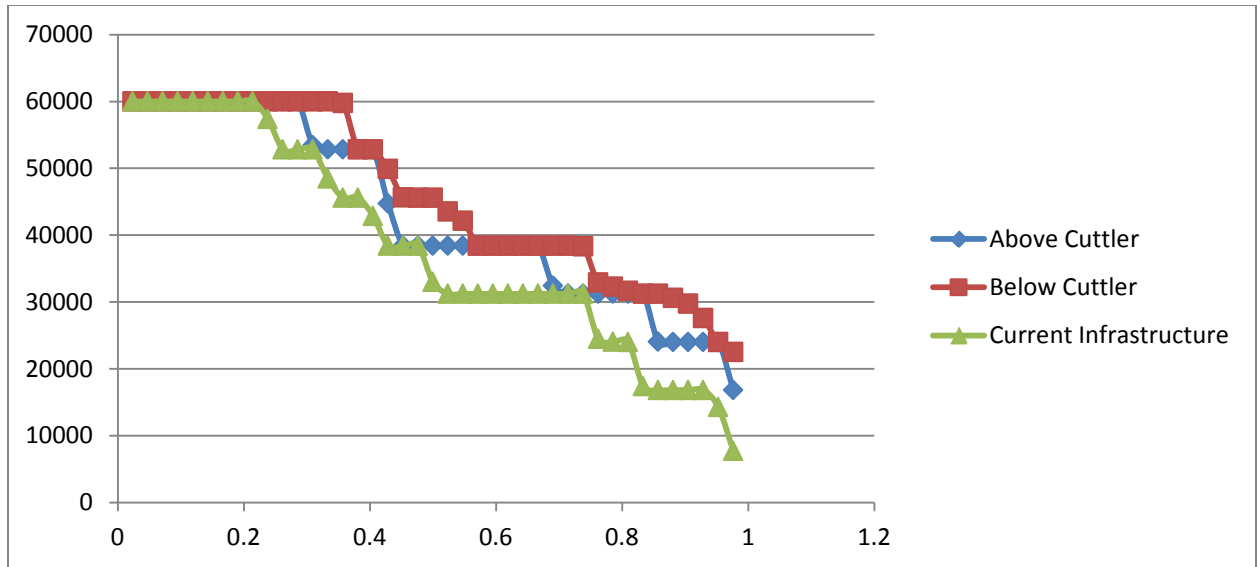


Figure 3-Delivery-Reliability Curve. Delivery is in acre-feet.